

STRAWBERRIES

By Celeste McCall

This is one of the 2019 \$1 lessons included with the ArtLessonUnivers.com memberships



I purchased an antique which has strawberries painted it on it. Not as many strawberries as above of course (you know me....more is better!) I hope you enjoy painting this. It is not meant to be photographic/realistic type of painting. It is a decorative type which is easy for all painters to replicate if they choose to make one for themselves or for a gift.



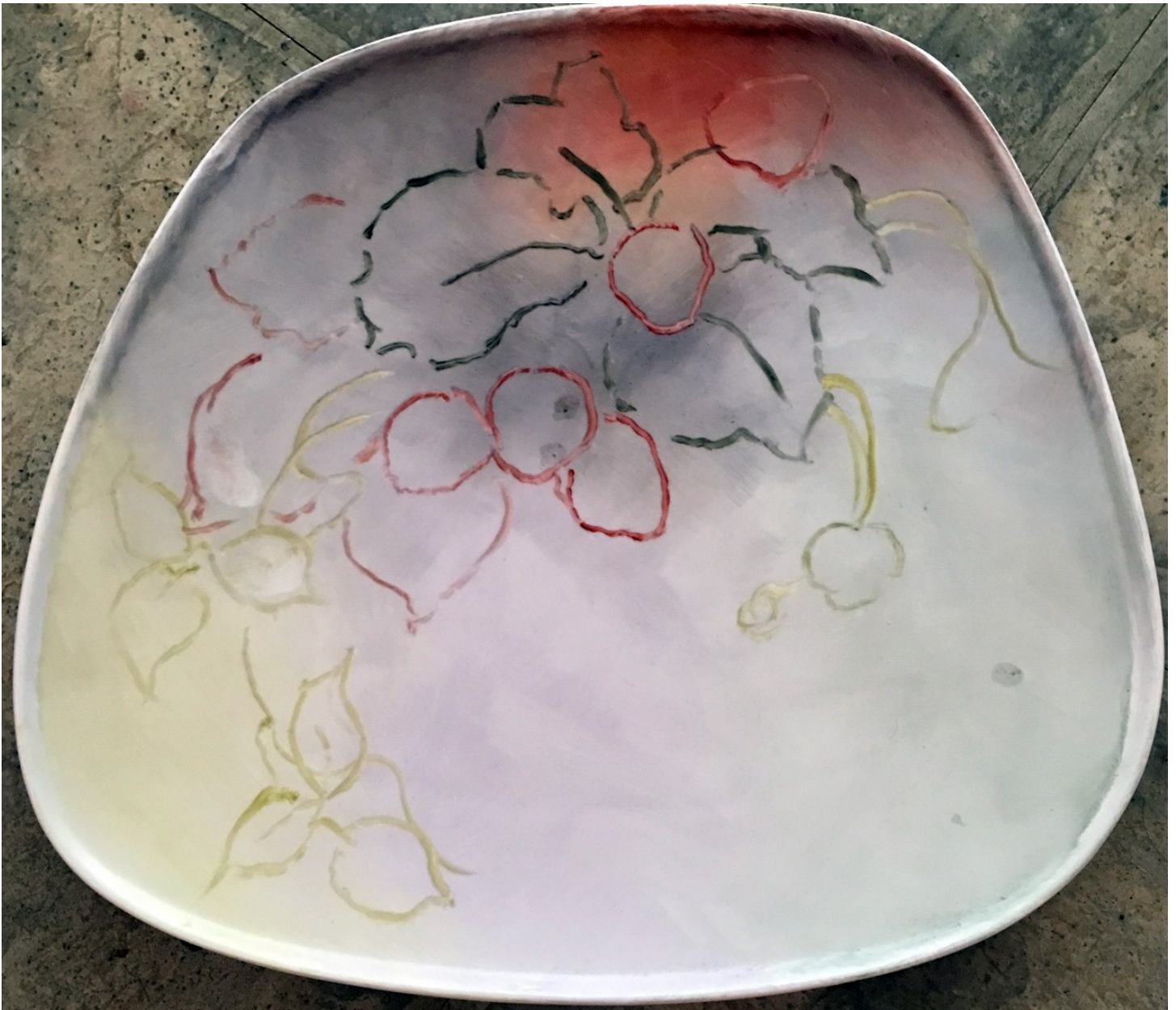
Here is a black and white to use for a line drawing. Don't trace the textures or shadows. Just the outlines. Or do like I did and paint on a background first and then sketch and paint all in one fire.

Paula White Colors: Cool Green, Ochre, South Brown (which is sort of a yellow reddish color), Pompadour or a darker type of red, Gold Green (olive color but brighter), Black Green, Cobalt Blue, and Yellow Green.

(The purpleish color is a mix of Pompadour plus cobalt)

(The cooler greens are a mix of the Cool Green plus Cobalt)

Again, this is a quick way to get something painted in a day. And this pattern could also be used on a mug or other 3-dimensional piece. Just cut the pieces and parts and put together on your pitcher, or bowl, or whatever you wish.



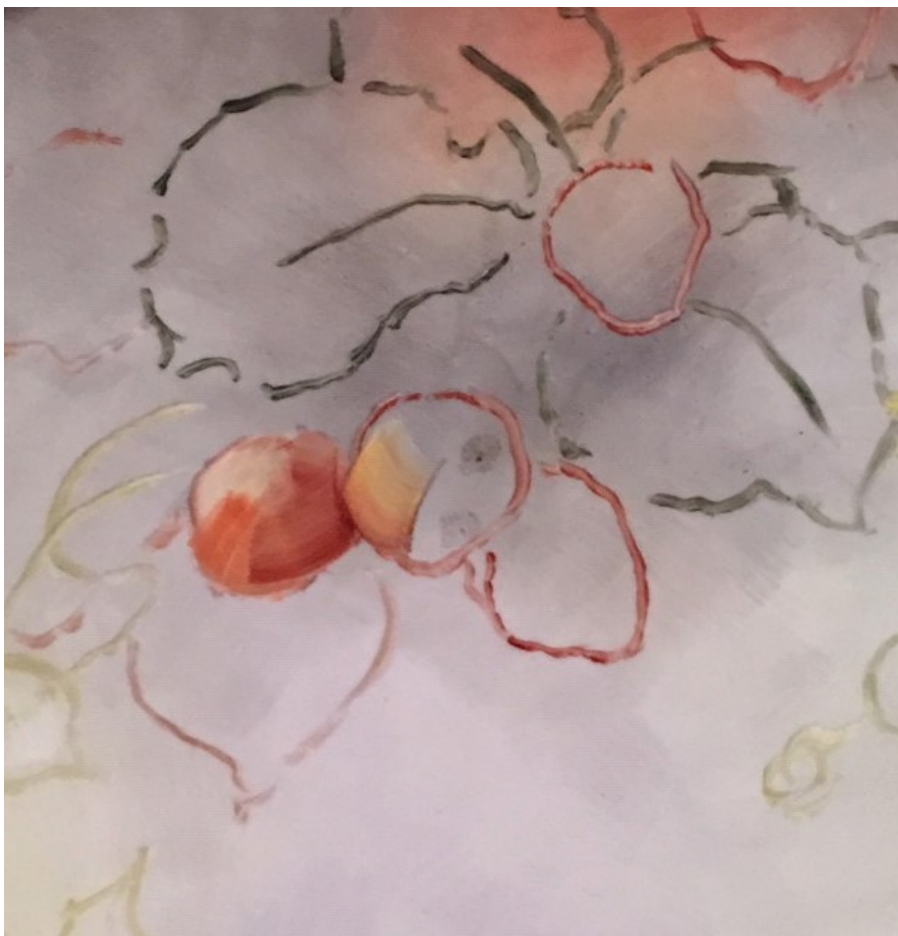
I purchased this damaged piece at a local club auction. Not sure if it will fire okay but decided to paint it anyway. See the spots on it? They seem to be ground away and are now without glaze. Hopefully they won't show too badly.

The background is wet. But not oily. If you paint with too much oil, then "pop-offs" will happen. You must apply the paint thinly and with a medium that isn't too oily. Paint thinly.....but dryly. A lot of work unless you use Turpenoid Natural to do washes with.

After applying the background (you can do this on a second fire if you prefer) the leaves, strawberries and stems are sketched on using a line brush. If a mistake is made it can be fixed using the background color re-applied.

Start by loosely blocking in all the strawberries.

Paint left to right on each strawberry with Ochre, then South Brown (yellow red), and then Pompadour.



They should look similar to this photo when you have blocked all them of them in.

I will likely cut back the size of the bottom strawberry as it seems to take over attention-wise.

That's a good lesson....so remember that larger objects in a group of objects will become the most eye-catching. So make sure it is THE one you want to be the STAR of the show. Not a scene-stealing underling!



Next, block in all the remaining leaves, stems and green strawberries.

I wish I had left the purple looking shadow leaves on the left side of this tray alone at this stage. You might want to do this also.

I think it looks better than the later fires on the shadow leaves.

Add Black green in the 3 places shown. Draw a line in the main leaf which curves back toward the main strawberry. All objects can lead back to the 'star' or focal point. It helps create unity to do this. And creates a dominant rhythm.



Now the fun begins. Wiping off the paint to reveal the highlight areas on the leaves. Use a clean blotted brush to remove paint.

NOTE: you must have dark to have light. However, the human eye can detect light easily in light areas, but not in dark areas. So, for instance, you can have a light leaf and the highlights will easily show. But a dark leaf needs more vigorous wipeouts to show value changes.

Put some of the yellow red faintly on the leaves where shown on this tray



Lastly, detail the strawberries with some textures. While this could be done to a more realistic standard if you want. I prefer them to be a little less talkative in saying where ever seed is on each berry.

To make the textures a small brush was used to paint overlapping and random c strokes working from left to right and them 'messing up' the perfectness by putting some on top of those. Otherwise it looked like a big blackberry.

Mix the Pompadour with some Black green and paint the shadow sides of the strawberries in the same strokes.

For the green strawberries, use the Ochre and the Yellow Green and the Cool Green.

Paint all stems in Cool Green and in some places use either Yellow Green or Black Green.



In conclusion, I do not particularly like the shadow leaves on the left as much as earlier in the painting. However, some may even want to paint those green and give even more detail than shown.

I would not paint the 'pecker' strawberry if I did this plate again. I think it draws a little too much attention. Then again it does echo the red in that area.

This needs a branch perhaps on the right hand side. Perhaps coming in a about 2:00 o'clock area.

Otherwise, it was a fun project and hope you are enjoying our 2019 \$1 lessons=\$12 per year membership at

Www.ArtLessonUniverse.com

Tell your friends to join or give a \$12 gift of these lessons to someone.

